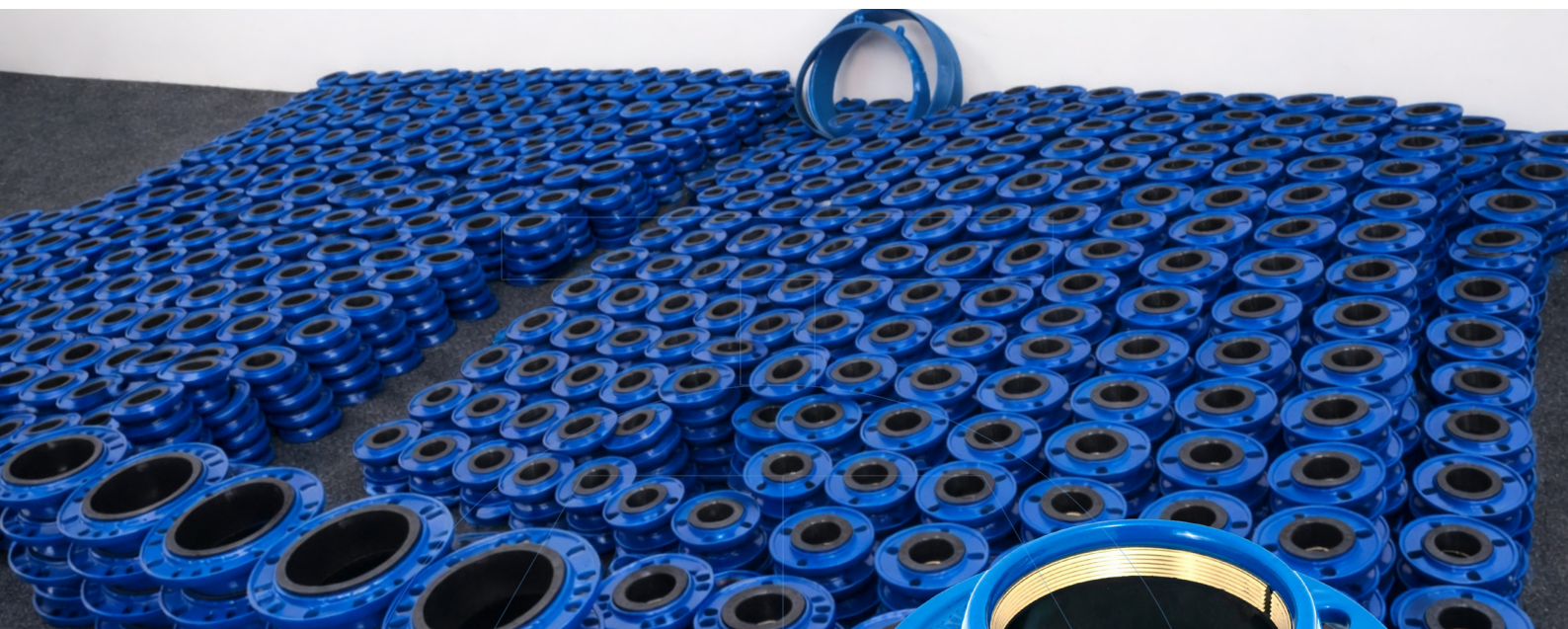




DAVINCI TECHNICAL DATA GUIDE

QUICK FLANGE ADATOR FOR PE PIPE

Ref. 634A-ROV / PN 10-16



Application

Repair and maintenance of existing pipelines
Water supply and distribution networks
Potable and non-potable water systems
Pumping stations
Water treatment plants
Irrigation field
Industrial pipelines projects
HVAC installations

Approvals/Standards

Comply with DN545
Mounting with flanges: PN10/16 EN 1092-2, ISO 7005-2.
Pressure Tests acc. to EN 12266-1 Rate A.
Pressure Tests: Body: 1,5 x PN.

Range

DN40-400, PN10-16



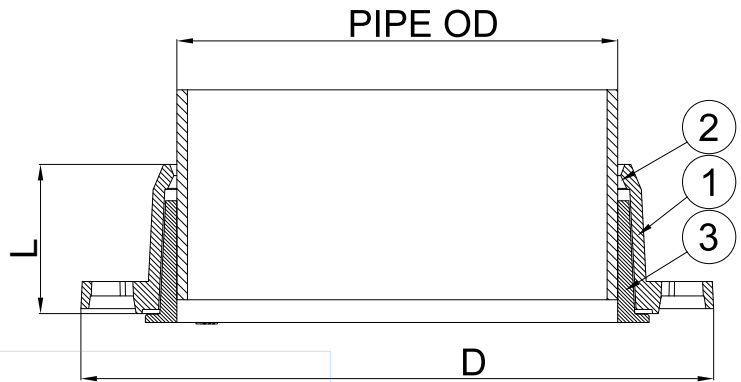
GENERAL CHARACTERISTICS

Sizes DN40 to DN400.
Working pressure PN10/16.
WRAS epoxy paint 250 microns:

WORKING CONDITIONS

Pressure ratings: 1.0 Mpa, 1.6 Mpa.
Working temperature: -10°C + 120°C (EPDM)
Working temperature: -10°C + 80°C (NBR)

DN	PIPE OD	L	D	Weight (kg)
40-50	50	50	165	1,4
50	63	55	165	1,5
60-65	63	55	185	2,0
60-65	75	58	185	1,9
80	90	60	200	2,4
100	110	68	220	3,4
125	125	70	250	3,6
125	140	75	250	3,5
150	160	80	285	5,5
200	200	90	340	7,2
200	225	93	340	6,8
250	250	95	400	10,6
300	315	100	455	12,8
400	400	120	580	21,3



Nº	ITEM	MATERIAL
1	Flanged body	GJS500-7
2	Retaining ring	Brass
3	Rubber	EPDM
	RAL 5015 Painting	Epoxy 250 µm

Components may be replaced with materials of equivalent or superior grade without prior notice, in accordance with our continuous improvement policy.

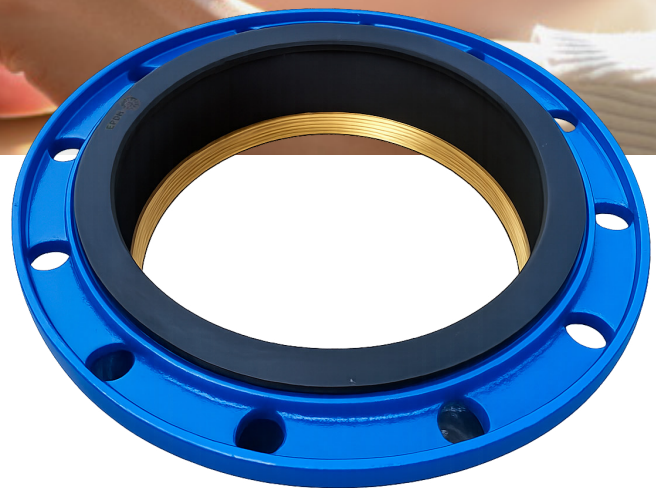




CONTACT US

DAVINCI GATE VALVES ORDER REQUEST

Ref. 634A-ROV / PN 10-16



Head Office CHENGDU

Room 3109 Unit 1 Building 2,
No. 68 Dongda Street
Jinjiang District, Chengdu, Sichuan
CHINA

+86 17340168233 +86 19302892712
valves@davincivalves.com

Europe Office MADRID
SPAIN
zuzana@davincivalves.com

WEBSITE

davincivalves.com

YOUR QUALITY WATER PROJECTS PARTNER
For professionals who look for more.