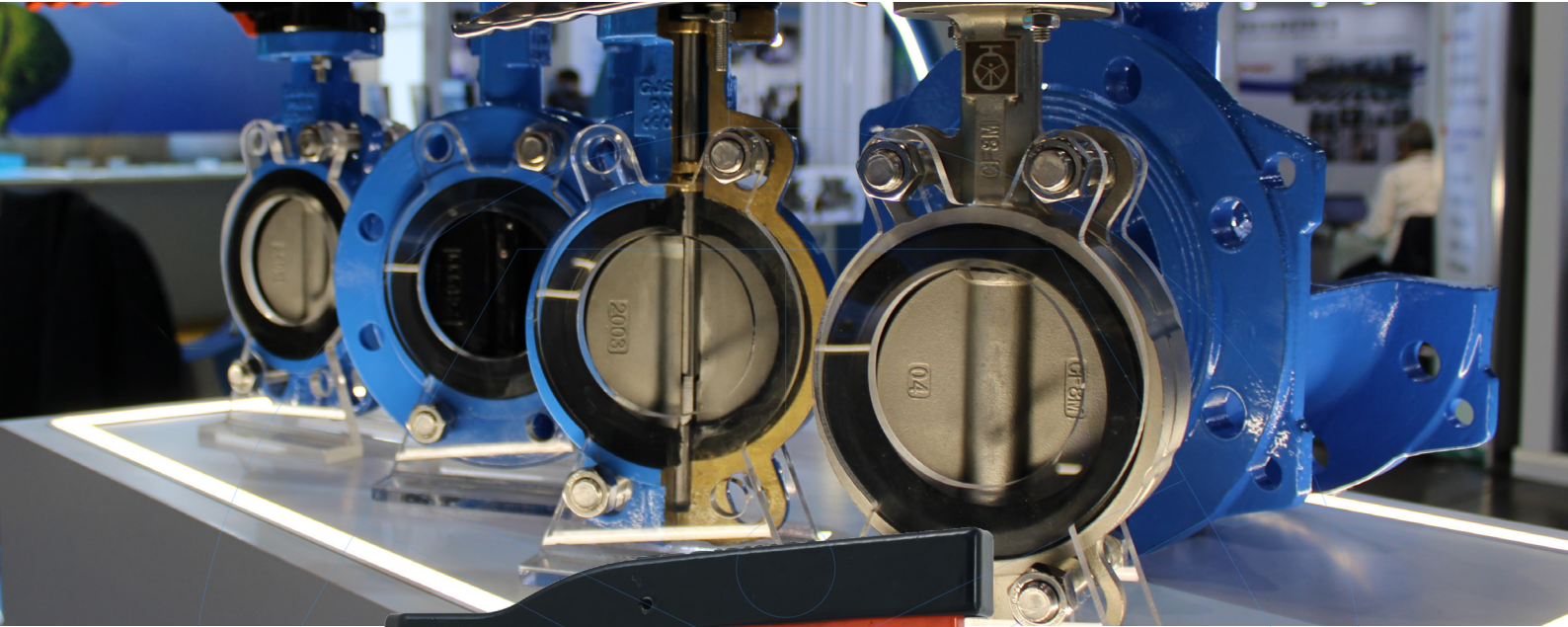




# BUTTERFLY VALVES

## WAFER 1 STEM

Ref. 111A-DH / PN 10-16



### Application

Drinking water networks  
HVAC installations  
Pressurized air  
Irrigation projects  
Industrial applications

### Approvals/Standards

Design: BS EN 593  
Face to Face: EN 558-1 Series 20  
Mounting between flanges: PN10/16 EN 1092-2, ISO 7005-2.  
Pressure Tests acc. to EN 12266-1 Rate A. GB/T13927-1992  
Pressure Tests: Body: 1,5 x PN. Seat: 1,1 x PN  
EU directive 2014/68/EU:  
Products excluded, article 1, § 2b up to DN300.  
Risk Category I MoD. A from DN350 to DN600

### Certifications

CE

### Range

DN40-600, PN10-16

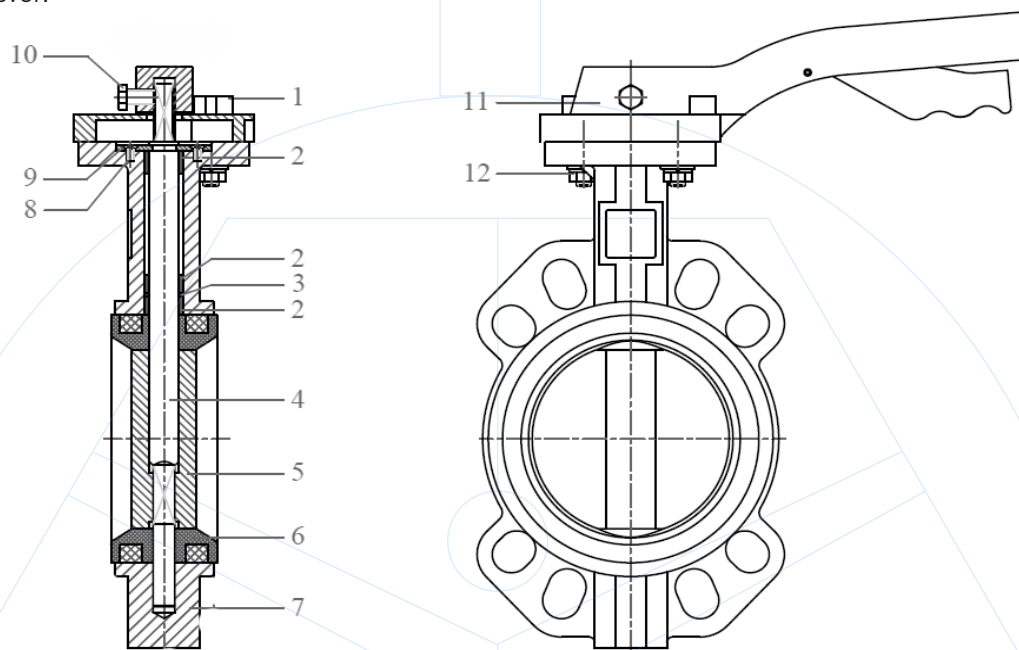


## GENERAL CHARACTERISTICS

Concentric disc design.  
 Range from DN40 up to DN600  
 Long neck for heat-insulated installations.  
 100% Tightness in both directions.  
 Low head loss.  
 Cartridge seat for easy replacement.  
 Does not need gaskets for installation.  
 Top flange according to ISO 5211.  
 10 positions lever.

## WORKING CONDITIONS

Maximum working pressure: 16 bar.  
 Working temperature:  
 - -10°C / 120°C for EPDM seat and CF8M disc.  
 - -10°C / 90°C for EPDM seat and GJS400 disc.  
 - -10°C / 80°C for NBR seat and CF8M/GJS400 disc.  
 Suitable media according to seat and disc material.

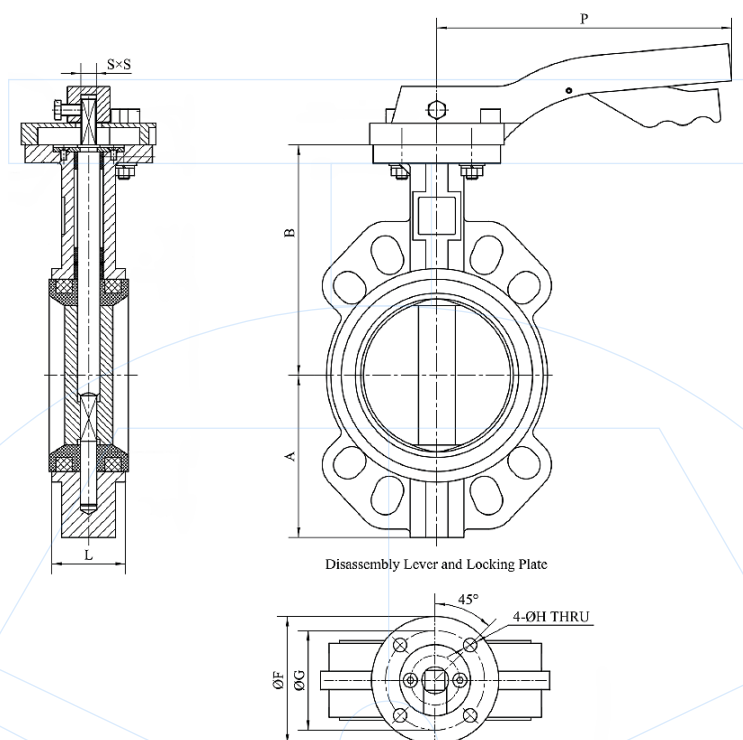


Nº	ITEM	MATERIAL (Standard / option)
1	Locking plate	Aluminum
2	Bushing	PTFE
3	O-rings	EPDM
4	Stem	AISI 420
5	Disc	GJS400 / CF8M
6	Seat	EPDM / NBR / PTFE / FKM
7	Body	GJS400
8	Bolts	A2-70
9	Thrust washer	Carbon steel
10	Bolts	A2-70
11	Lever	Aluminum
12	Bolt & nut	A2
	RAL 5015 Painting	Epoxy 250 µm for body
	RAL 9005 Painting	Epoxy 250 µm for disc (only GJS400 disc)

*Components may be replaced with materials of equivalent or superior grade without prior notice, in accordance with our continuous improvement policy.*



## DIMMENSIONS FOR VALVES BARE SHAFT

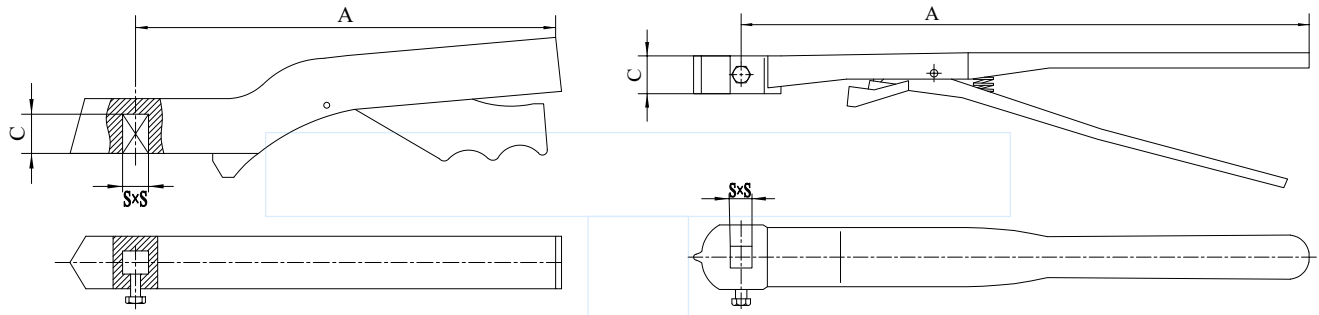


DN	L	A	B	ØG	ØF	ØH	S	P	ISO 5211	Bareshaft stem height	Torque (N·m)		Weight (kg)
											PN10	PN16	
40	32	70	124	50	65	7	9	198	F05	32	11.5	12.9	2
50	42	76	129	50	65	7	9	198	F05	32	17.5	19.2	2.5
65	45	89	136	50	65	7	9	198	F05	32	27.7	30.9	3
80	45	95	144	50	65	7	9	198	F05	32	36.7	39.6	4
100	52	114	162	70	90	9.5	11	270	F07	32	56.4	64.8	5
125	54	127	188	70	90	9.5	14	270	F07	32	85.4	101.8	7
150	56	139	204	70	90	9.5	14	270	F07	32	123.8	147.8	8
200	60	177	238	70	90	9.5	17	270	F07	38	206.6	240.0	12
250	66	203	282	102	125	11.5	22	540	F10	38	328.0	380.1	22
300	67	242	311	102	125	11.5	22	540	F10	38	478.1	538.0	29





**DIMMENSIONS FOR LEVER AND MODELS**



DN	A	S	C min
40-80	198	9	20
100	270	11	22
125-150	270	14	22
200	270	17	22

DN	A	S	C min
250-300	540	22	22



**HA MODEL**

Ductile cast iron handle.  
Galvanized steel plate,  
with 10 positions.  
Low price.



**HB MODEL**

Ductile cast iron handle.  
Galvanized steel plate,  
with 10 positions.  
With hole for padlock.



**HC MODEL**

Carbon steel handle.  
Galvanized steel plate,  
with 10 positions.  
Light design.



**HD MODEL**

Ductile cast iron handle.  
ABS plate, with 10 positions.  
Low price.



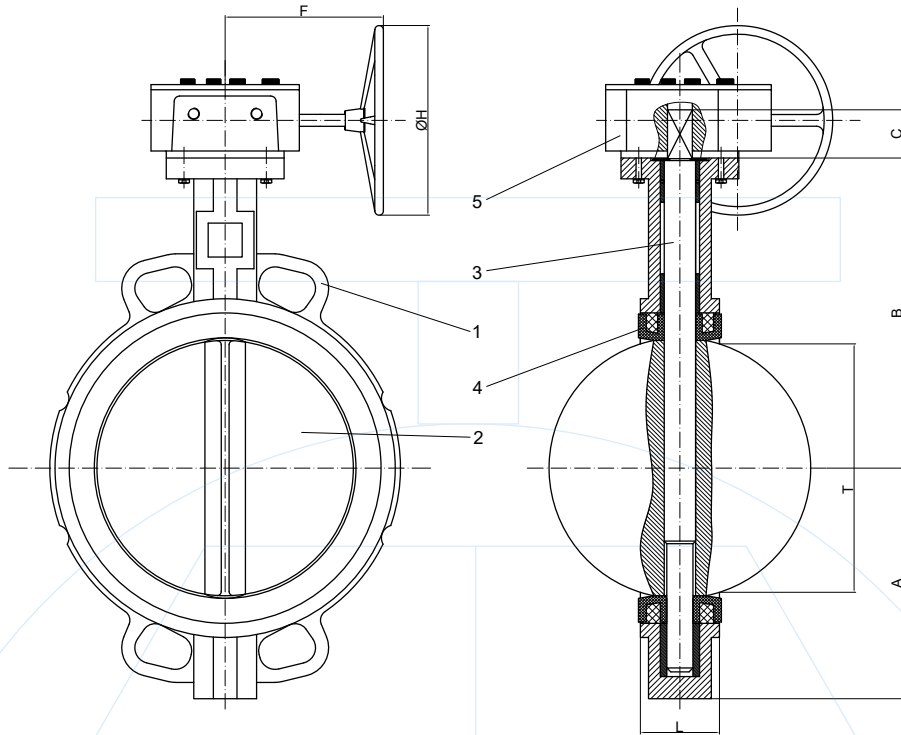
**HE MODEL**

Ductile cast iron handle.  
Galvanized steel plate,  
with 10 positions.  
High resistance and endurance.

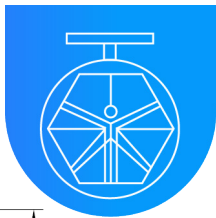


**HF MODEL**

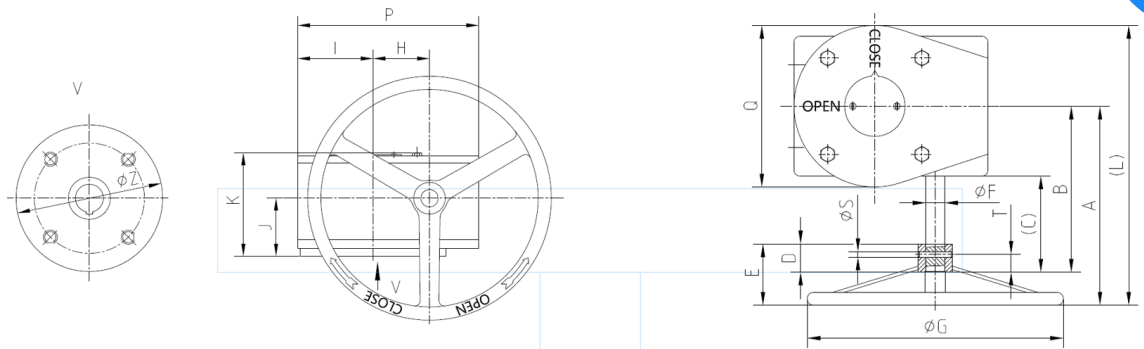
Aluminum handle.  
Aluminum plate, with 10 positions.  
Light design and high resistance to  
corrosion.



DN	L	A	B	ØG	ØF	ØH	F	T	Shaft	ISO 5211	Bareshaft stem height	Torque (N-m)		Weight (kg)
												PN10	PN16	
40	32	70	124	50	65	144	154	27	9x9	F05	32	11.5	12.9	4.5
50	42	76	129	50	65	144	154	32	9x9	F05	32	17.5	19.2	5
65	45	89	136	50	65	144	154	47	9x9	F05	32	27.7	30.9	5.5
80	45	95	144	50	65	144	154	65	9x9	F05	32	36.7	39.6	6
100	52	114	162	70	90	144	156	90	11x11	F07	32	56.4	64.8	7.5
125	54	127	188	70	90	144	156	111	14x14	F07	32	85.4	101.8	9.5
150	56	139	204	70	90	144	156	145	14x14	F07	32	123.8	147.8	11
200	60	177	238	70	90	283	211	193	17x17	F07	38	206.6	240.0	20
250	66	203	282	102	125	283	211	241	22x22	F10	38	328.0	380.1	29
300	67	242	311	102	125	283	200	292	22x22	F10	38	478.1	538.0	37.5
350	77	277	368	102	125	283	200	325	22x22	F10	45	553.6	674.9	46
400	86	308	400	165	210	385	285	380	27x27	F16	51	870.0	993.4	75
450	105	342	422	165	210	385	285	428	27x27	F16	51	1297.0	1552.9	89
500	130	374	479	165	210	385	250	474	27x27	F16	64	1581.7	1804.6	128
600	152	459	562	165	210	385	293	575	36x36	F16	70	2878.8	3029.9	206

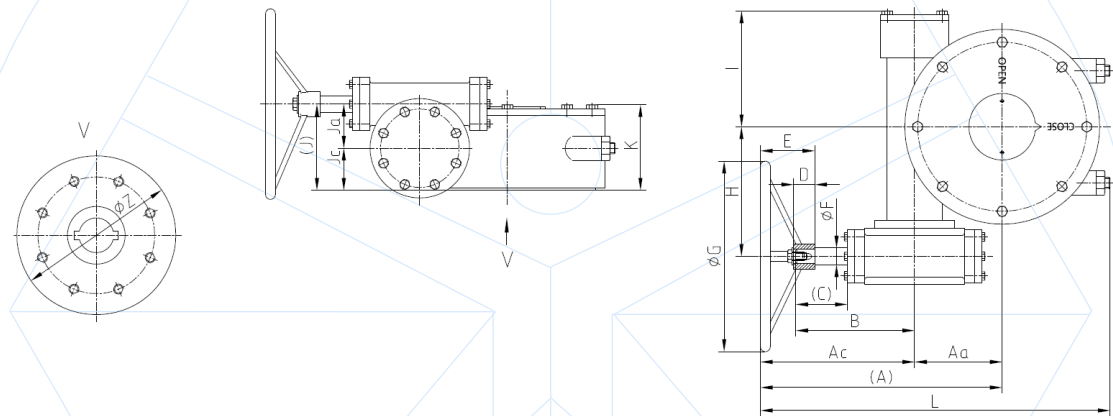


## GEARBOX DETAILS



### 1 STAGE GEARBOX

DN	Torque N·m	Ratio	A	B	C	D	E	ØF	ØG	H	I	J	K	L	P	Q	ØS	T	ØZ
40-150	170	27 : 1	141	110	72	25	54	15.8	135	44	48	18	27.6	189	116	96	5	17.5	93
200-250	170	24 : 1	214	187	133	32	56	18.8	275	62	72.5	38	38.6	284	164	140	6	24	125
300-350	170	24 : 1	223	196	135	32	56	18.8	275	78	76.5	39.5	40.6	300	189	154	6	23.5	140
400-450	750	30 : 1	287	251	171	48	82	25	380	109	108.5	36	54.5	397	256	220	8	52	205



### 2 STAGES GEARBOX

DN	Torque N·m	Ratio	A	Aa	Ac	B	C	D	E	ØF	ØG	H	I	J	Ja	Jc	K	L	ØZ
500	3000	532:1	257	102	155	121	53	29	62	25	285	167	113	116	62	54	111	364	210
600	4000	640:1	301	126	175	142	57	32	66	25	380	200	140	131	66	65	134	438	276
700-800	8000	704:1	335	140	195	165	68	48	82	30	380	223	146	158	88	70	168	495	300
900-1100	15000	832:1	365	170	195	165	68	51	80	30	420	238	170	163	88	75	168	527	300
1200	20000	800:1	425	180	245	195	70	50	89	40	500	310	250	221	126	95	221	661	350

### 1 Stage model



### 2 Stages model

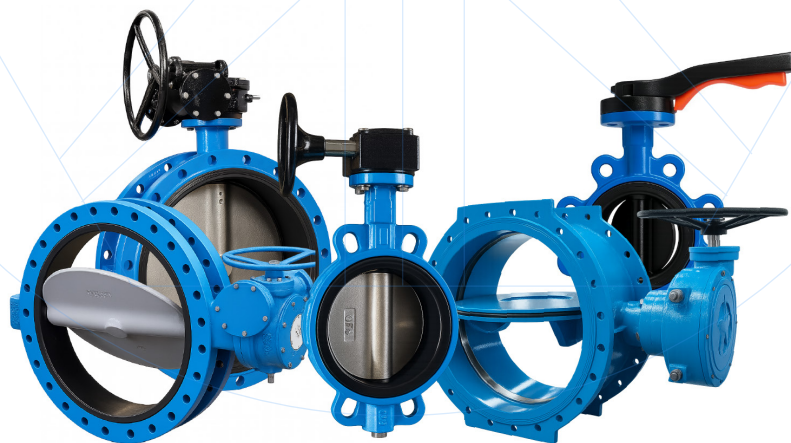


ITEM	MATERIAL (Standard / option)
Body	Cast Iron / Ductile iron, Aluminun
Gears	Ductile iron / Al-Bronze
Shaft	Carbon steel / Stainless steel



## FLOW CHARACTERISTICS GPM/ $\Delta P$

DN	DEGREE OPEN								
	10°	20°	30°	40°	50°	60°	70°	80°	90°
50	0.06	3	7	15	27	44	70	105	115
65	0.1	6	12	25	45	75	119	178	196
80	0.2	9	18	39	70	116	183	275	302
100	0.3	17	36	78	139	230	364	546	600
125	0.5	29	61	133	237	392	620	930	1022
150	0.8	45	95	205	366	605	958	1437	1579
200	2	89	188	408	727	1202	1903	2854	3136
250	3	151	320	694	1237	2049	3240	4859	5340
300	4	234	495	1072	1911	3162	5005	7507	8250
350	6	338	715	1549	2761	4568	7230	10844	11917
400	8	464	983	2130	3797	6282	9942	14913	16388
450	11	615	1302	2822	5028	8320	13168	19752	21705
500	14	791	1647	3628	6465	10698	16931	25396	27908
600	22	1222	2587	5605	9989	16528	26157	39236	43116
700	31	1703	3605	7813	13961	23037	36459	54689	60102
800	100	2436	5272	10636	18025	29440	47622	70876	77897
900	260	3050	6730	12740	20220	32500	52500	79600	87500
1000	313	3665	8089	15942	24299	39056	63093	95660	105154
1200	455	5365	11840	22400	30600	51200	92300	140000	154000





CONTACT US

# DAVINCI VALVES ORDER REQUEST

Ref. 111A-DH / PN 10-16



## Head Office CHENGDU

Room 3208 Unit 1 Building 1,  
No. 6 Zhiqian Section, Dongda Street  
Jinjiang District, Chengdu, Sichuan  
CHINA

+86 17340168233 +86 19302892712  
valves@davincivalves.com

Europe Office MADRID  
SPAIN  
zuzana@davincivalves.com

## WEBSITE

davincivalves.com

YOUR QUALITY WATER PROJECTS PARTNER  
For professionals who look for more.