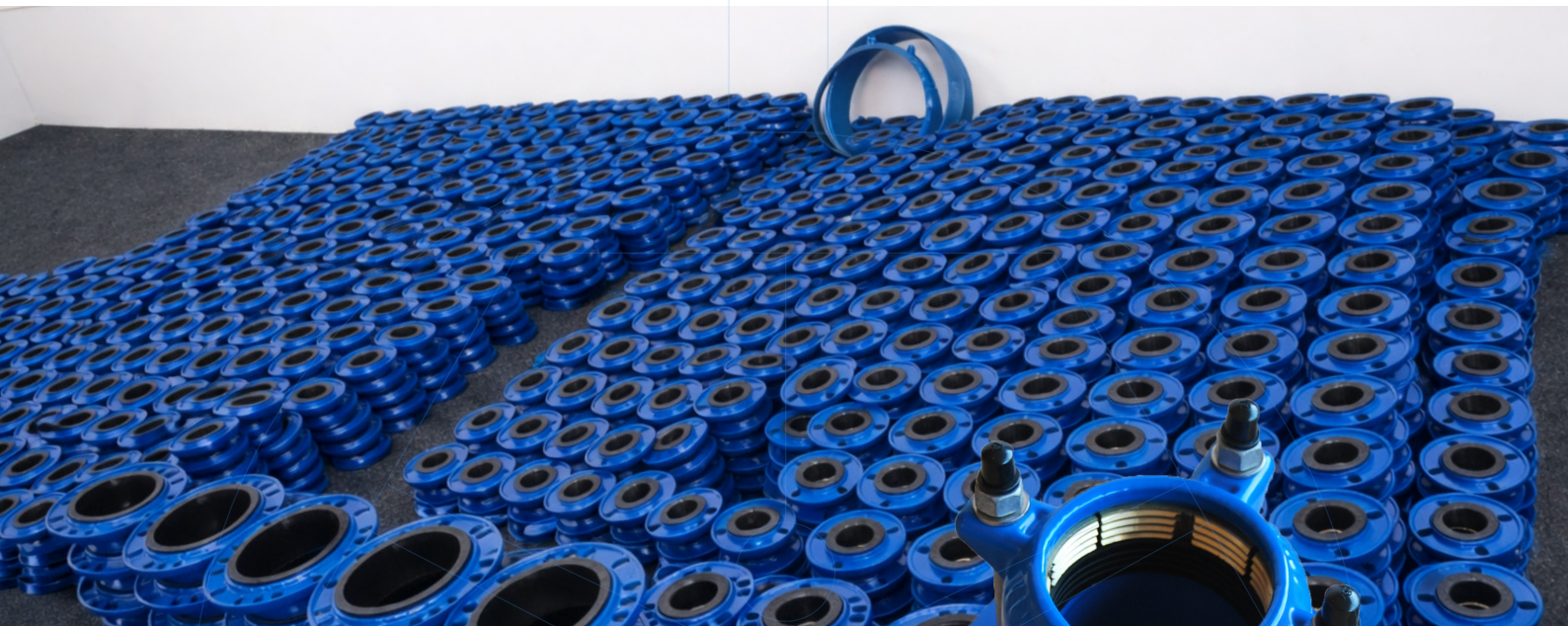




DAVINCI TECHNICAL DATA GUIDE

RESTRAINED FLANGE ADAPTOR FOR PE/HDPE/PVD PIPE

Ref. 632A-BUJ / PN 10-16



Application

Repair and maintenance of existing pipelines
Water supply and distribution networks
Potable and non-potable water systems
Pumping stations
Water treatment plants
Irrigation field
Industrial pipelines projects
HVAC installations

Approvals/Standards

Comply with DN545
Mounting with flanges: PN10/16 EN 1092-2, ISO 7005-2.
Pressure Tests acc. to EN 12266-1 Rate A.
Pressure Tests: Body: 1,5 x PN.

Range

DN50-1200, PN10-16





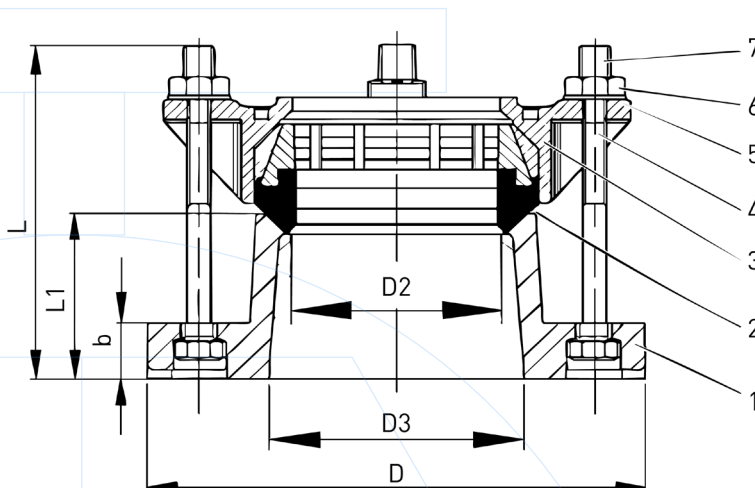
GENERAL CHARACTERISTICS

Sizes DN50 to DN1200.
Working pressure PN10/16.
WRAS epoxy paint 250 microns:

WORKING CONDITIONS

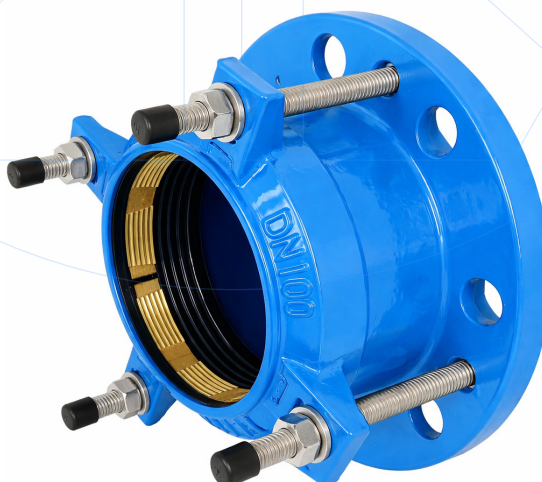
Pressure ratings: 1.0 Mpa, 1.6 Mpa.
Working temperature: -10°C + 120°C (EPDM)
Working temperature: -10°C + 80°C (NBR)

Nº	ITEM	MATERIAL
1	Body	GJS450-10
2	Sealing ring	EPDM + Brass
3	End ring	GJS450-10
4	Bolts	Dacromet coated steel
5	Washer	Dacromet coated steel
6	Nuts	Dacromet coated steel
7	Cap	Plastic
	RAL 5015 Painting	Epoxy 250 µm



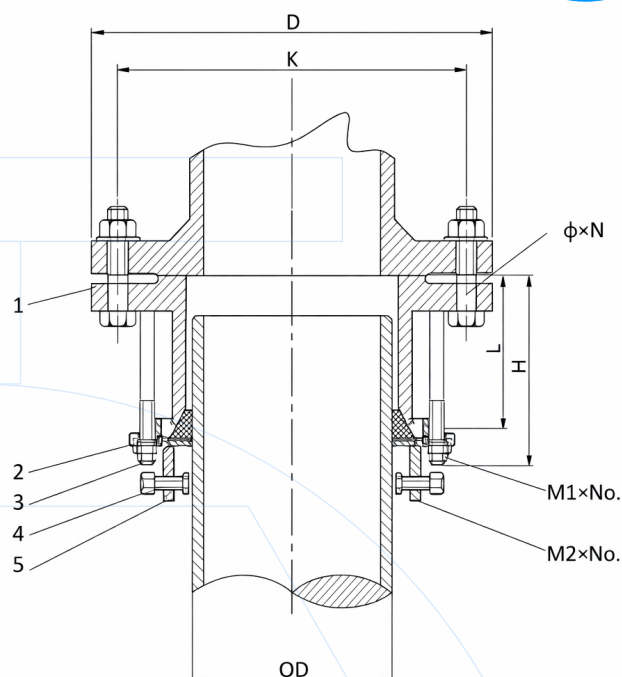
Components may be replaced with materials of equivalent or superior grade without prior notice, in accordance with our continuous improvement policy.

DN	PIPE OD	D2	D3	D	B	L1	L	SIZE	Weight (kg)
50	50	53.5	62	165	19	63	110	M12x2	2,3
50/60/65	63	67	73	185	19	63	110	M12x2	2,8
60/65	75	79	87	185	19	63	110	M12x2	3,4
80	90	94	102	200	19	63	110	M12x4	3,9
100	110	114	122	220	19	63	110	M12x4	4,3
125	125	129	137	245	19	63	110	M12x4	5,8
150	160	164.5	173	285	19	65	110	M12x4	7,3
150	180	184.5	193	285	19	65	110	M12x4	6,9
200	200	205	215	340	19	75	120	M12x4	9,6
250	250	255	265	400	22	75	120	M12x6	12,9
300	315	320	329	455	24	85	130	M12x6	16,7

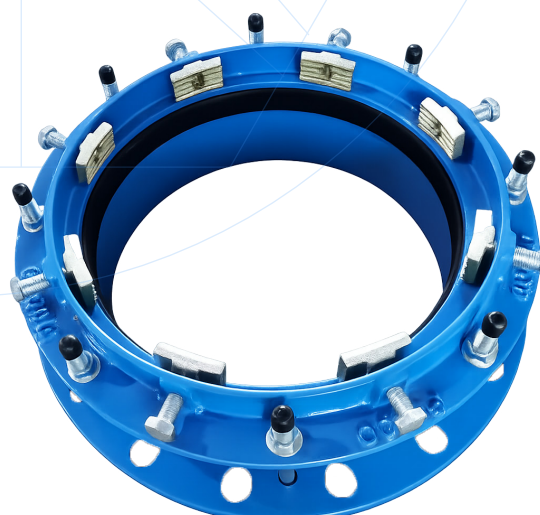
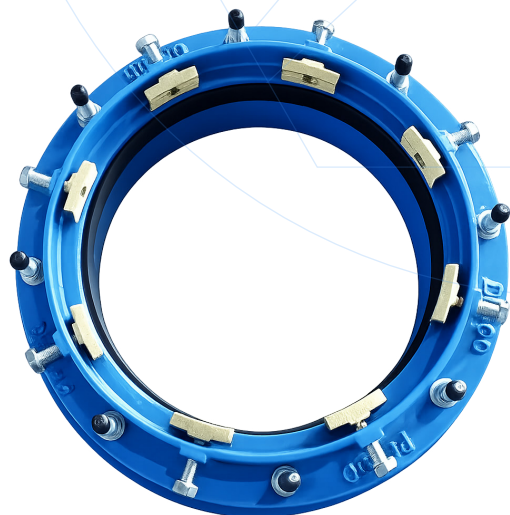




Nº	ITEM	MATERIAL
1	Body	GJS450-10
2	Gasket	EPDM
3	Threaded tie rods	Galvanized steel grade 4.8
4	Grip	Zinc plated cast iron + carbon steel grade 4.8
5	End ring	GJS450-10
	RAL 5015 Painting	Epoxy 250 µm



DN	PIPE OD	D	K	L	H	ØxN	M1xNo	M2xNo	Note	Weight (kg)
350	355	520	470	100	170	28x16	M16x8	M16x8	Straight	36.6
400	425	580	525	150	220	31x16	M16x8	M16x8	Stepped	47.5
400	400	580	525	100	170	31x16	M16x8	M16x8	Straight	42
450	455	640	585	100	170	31x20	M16x10	M16x10	Straight	56
500	500	715	650	110	190	34x20	M16x10	M16x10	Straight	77.5
600	630	840	770	110	190	37x20	M16x10	M16x10	Straight	76
700	710	810	840	120	200	37x24	M16x12	M16x12	Straight	91.5
800	800	1025	950	120	210	40x24	M16x12	M16x12	Straight	142
900	900	1125	1050	140	240	40x28	M16x14	M16x14	Straight	162
1000	1000	1485	1170	140	240	43x28	M16x14	M16x14	Straight	218
1200	1200	1685	1390	150	260	49x32	M16x16	M16x16	Straight	265





CONTACT US

DAVINCI VALVES ORDER REQUEST



Head Office CHENGDU

Room 3208 Unit 1 Building 1,
No. 6 Zhiquan Section, Dongda Street
Jinjiang District, Chengdu, Sichuan
CHINA

+86 17340168233 +86 19302892712
valves@davincivalves.com

Europe Office MADRID
SPAIN

zuzana@davincivalves.com

WEBSITE

davincivalves.com

YOUR QUALITY WATER PROJECTS PARTNER
For professionals who look for more.