

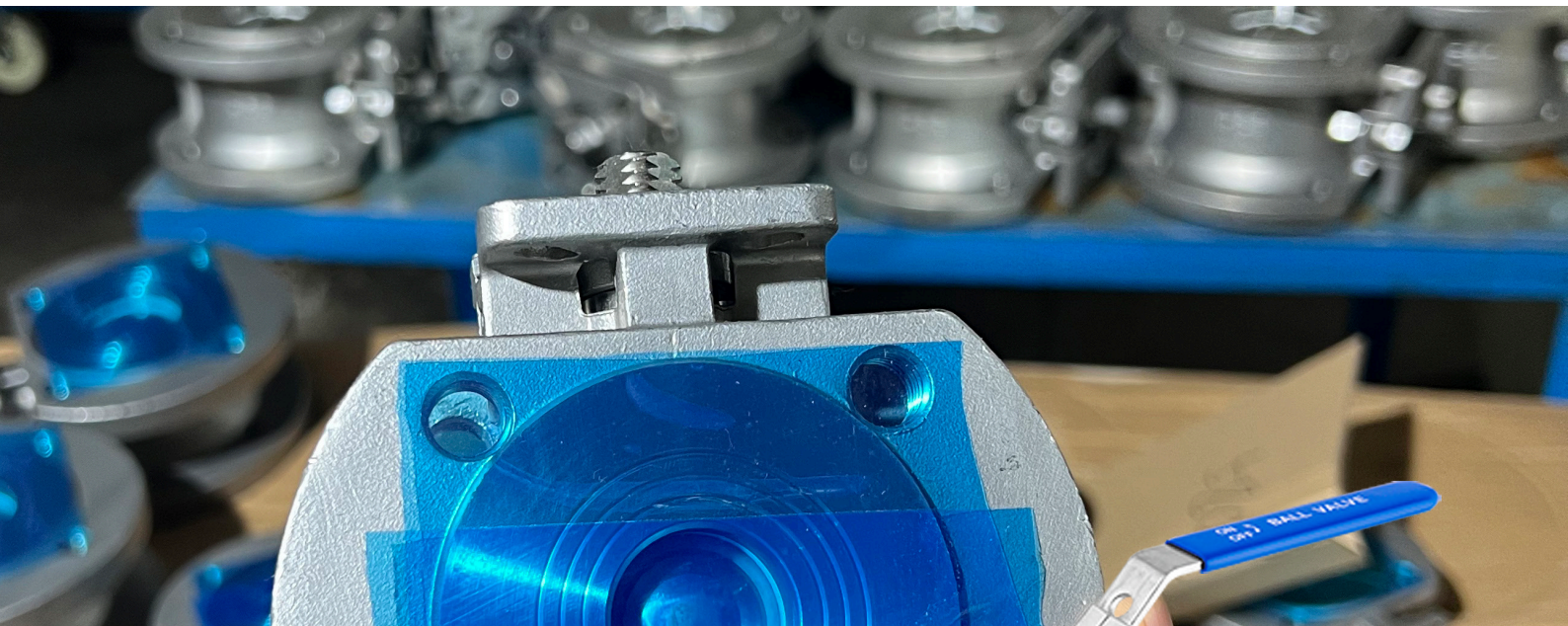


DAVINCI TECHNICAL DATA GUIDE

# BALL VALVE

## WAFER TYPE

Ref. 132A-OW / PN 10-16-25-40



### Application

Chemical and industrial plants  
Heating and air conditioning (HVAC)  
Agricultural applications  
District heating  
Oils and hydrocarbons

### Approvals/Standards

Comply with EN 12516  
Mounting with flanges: PN10/16/25/40 EN 1092-2, ISO 7005-2.  
Mounting pad acc. to ISO 5211  
Pressure Tests acc. to EN 12266-1 Rate A.  
Pressure Tests: Body: 1,5 x PN.

### Range

DN15-150, PN10-16-25-40





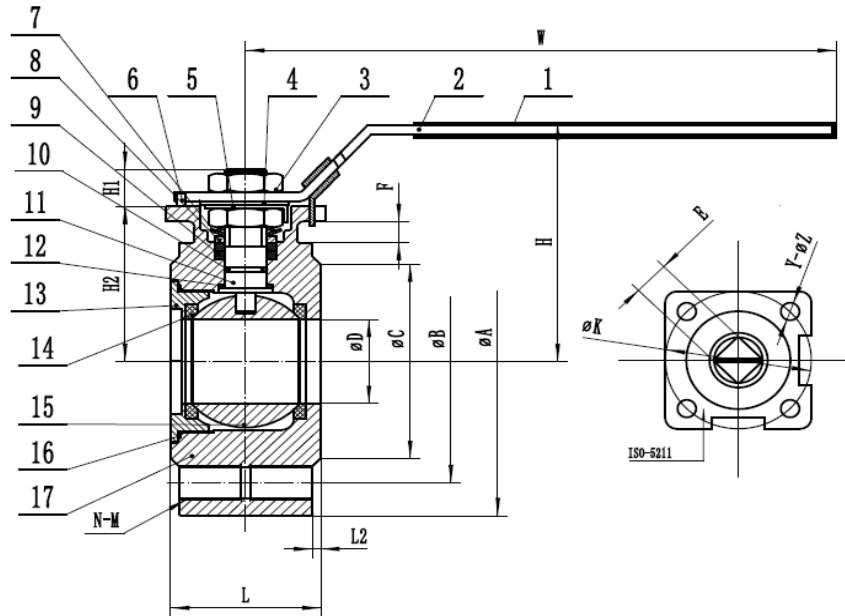
## GENERAL CHARACTERISTICS

Sizes DN15 to DN150.  
Working pressure PN10/16/25/40.  
Fully stainless steel body.

## WORKING CONDITIONS

Pressure ratings: 1.0, 1.6, 2.5 & 4.0 Mpa.  
Working temperature: -20°C + 200°C

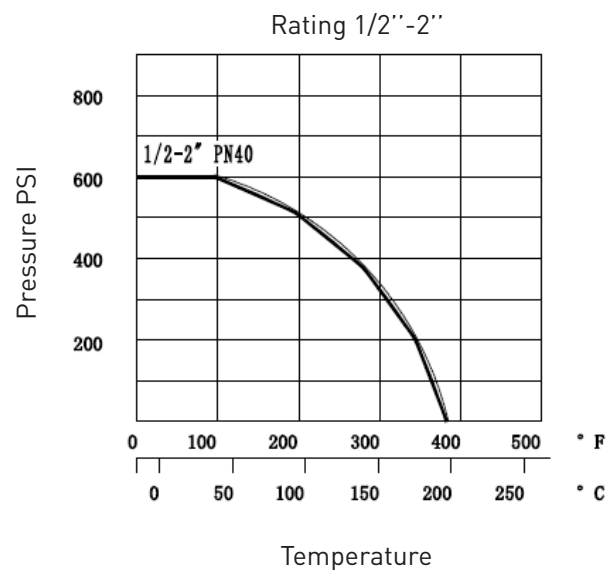
Nº	ITEM	MATERIAL
1	Handle cover	Plastic
2	Handle	AISI 304
3	Stem nut	AISI 304
4	Washer	AISI 304
5	Lock washer	AISI 304
6	Stop block	AISI 304
7	Spring washer	AISI 304
8	Stem ring	AISI 304
9	Stem packing	PTFE
10	O-ring	FKM
11	Stem	AISI 316
12	Thrust washer	PTFE
13	Cap	CF8M
14	Ball seat	PTFE + 15%GF
15	Ball	CF8M
16	Body seal	PTFE
17	Body	CF8M



Components may be replaced with materials of equivalent or superior grade without prior notice, in accordance with our continuous improvement policy.

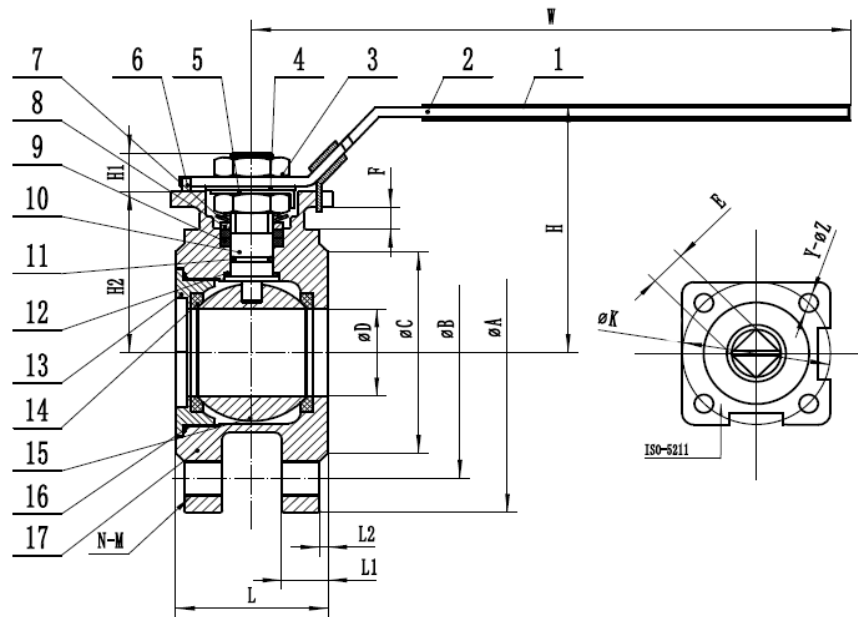
DN	ØD	ØC	ØB	ØA	L	H	H2	H1	W	L2	N-M	K	Y-ØZ	E	F	Torque (N·m)	Weight (kg)
15	15	45	65	95	35	75	49.5	9	125.2	2	4-M12	36	4-5	9	12	7	1.36
20	20	58	75	105	39	80	55.5	9	125.2	2	4-M12	36	4-5	9	14	9	1.84
25	25	68	85	115	44	95	65	11	136.2	2	4-M12	42	4-6.4	11	17	13	2.52

## PRESSURE-TEMPERATURE CHART



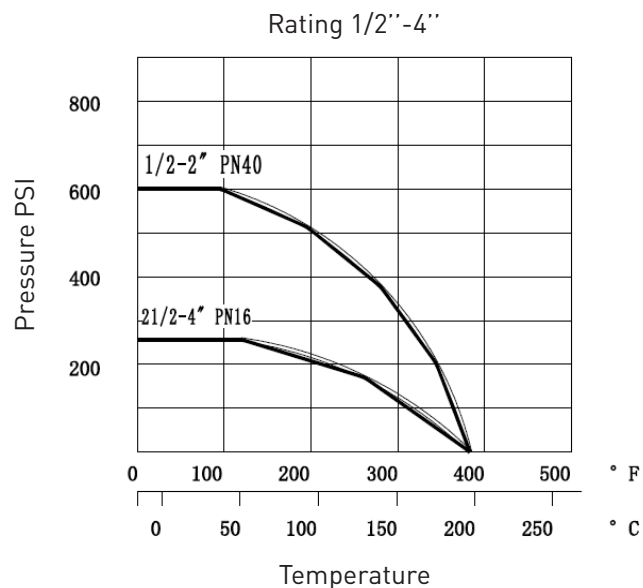


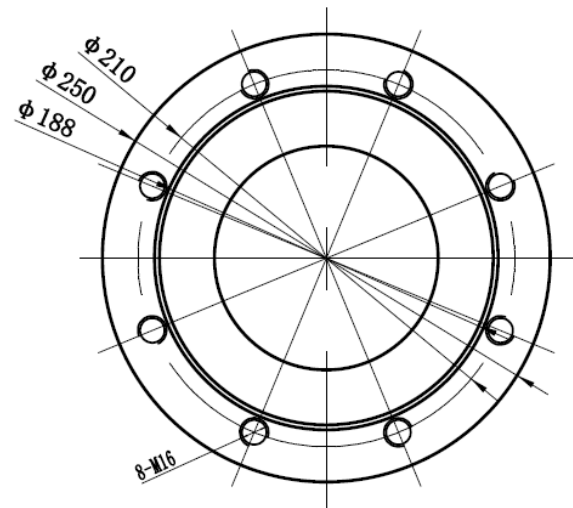
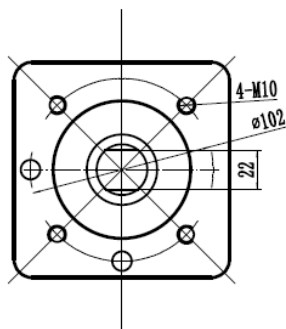
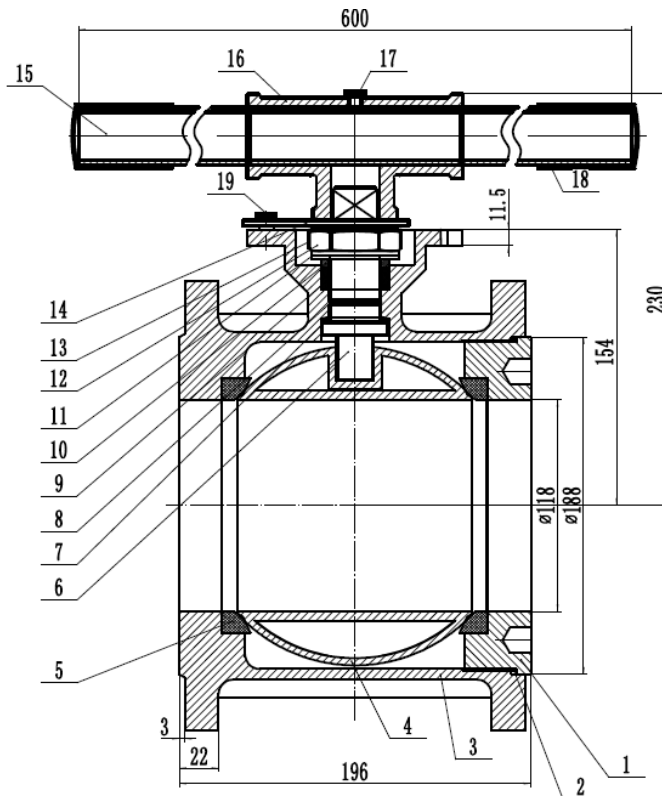
Nº	ITEM	MATERIAL
1	Handle cover	Plastic
2	Handle	AISI 304
3	Stem nut	AISI 304
4	Washer	AISI 304
5	Lock washer	AISI 304
6	Stop block	AISI 304
7	Spring washer	AISI 304
8	Stem ring	AISI 304
9	Stem packing	PTFE
10	O-ring	FKM
11	Stem	AISI 316
12	Thrust washer	PTFE
13	Cap	CF8M
14	Ball seat	PTFE + 15%GF
15	Ball	CF8M
16	Body seal	PTFE
17	Body	CF8M



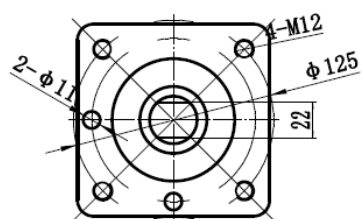
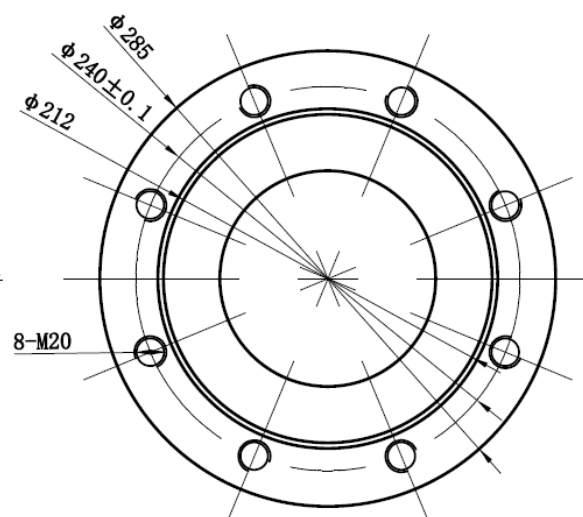
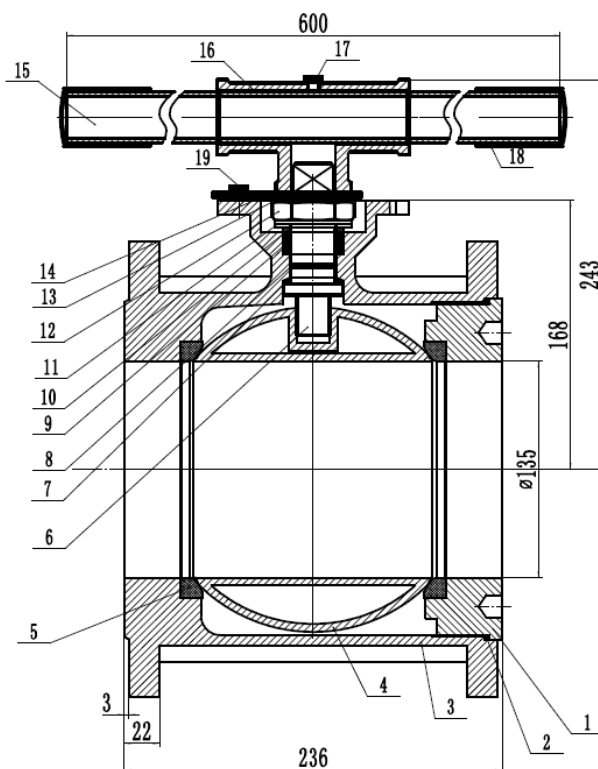
DN	ØD	ØC	ØB	ØA	L	H	H2	H1	W	L2	N-M	K	Y-ØZ	E	F	Torque (N·m)	Weight (kg)
32	32	78	100	140	52	101.5	71.5	11	136.2	2	4-M16	42	4-6.4	11	17	19	3.67
40	38	88	110	150	64	122.5	78	14	204.5	2	4-M16	50	4-7	14	17	27	4.7
50	50	102	125	165	83	121.5	86	14	204.5	2	4-M16	50	4-7	14	21	40	6.34
65	65	122	145	185	105	142	101	18	250	2	4-M16	70	4-9	17	18	60	9.85
80	76	135	160	200	121	161	117	18	250	3	8-M16	70	4-9	17	20	85	12.8
100	94	158	180	220	152	174	130	20.5	320	3	8-M16	102	4-11	17	20	150	20.73

### PRESSURE-TEMPERATURE CHART





Nº	ITEM	MATERIAL
1	Cap	CF8M
2	Gasket	PTFE
3	Body	CF8M
4	Ball	AISI 316 / 304
5	Seat	RPTFE
6	Stem	AISI 316
7	Thrust washer	PTFE
8	O-ring	FKM
9	Packing	PTFE
10	Ring	AISI 304
11	Belleville washer	AISI 301
12	Nut	AISI 304
13	Nut stopper	AISI 304
14	Lock device	AISI 304 AISI 304
15	Handle	AISI 304
16	Sleeve	AISI 304
17	Jackscrew	AISI 304
18	Bolt	Plastic
19	Plastic cover	AISI 304
20	Stop pin	

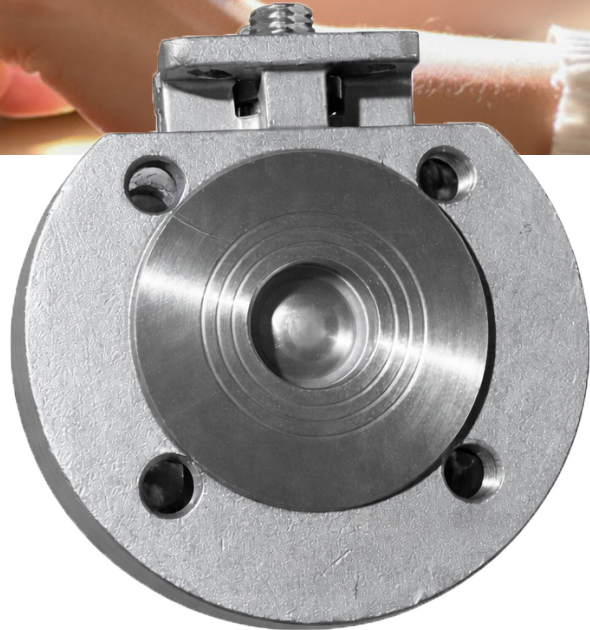


Nº	ITEM	MATERIAL
1	Cap	CF8M
2	Gasket	PTFE
3	Body	CF8M
4	Ball	AISI 316 / 304
5	Seat	RPTFE
6	Stem	AISI 316
7	Thrust washer	PTFE
8	O-ring	FKM
9	Packing	PTFE
10	Ring	AISI 304
11	Belleville washer	AISI 301
12	Nut	AISI 304
13	Nut stopper	AISI 304
14	Lock device	AISI 304 AISI 304
15	Handle	AISI 304
16	Sleeve	AISI 304
17	Jackscrew	AISI 304
18	Bolt	Plastic
19	Plastic cover	AISI 304
20	Stop pin	



CONTACT US

# DAVINCI GATE VALVES ORDER REQUEST



**Head Office CHENGDU**

Room 3109 Unit 1 Building 2,  
No. 68 Dongda Street  
Jinjiang District, Chengdu, Sichuan  
CHINA

+86 17340168233 +86 19302892712  
valves@davincivalves.com

Europe Office MADRID  
SPAIN  
zuzana@davincivalves.com

**WEBSITE**

davincivalves.com

**YOUR QUALITY WATER PROJECTS PARTNER**  
For professionals who look for more.